



Hard Chess Puzzle # 0125

By

G Bud Games
<https://gbud.in>

February 2, 2022

Contents

Hard Chess puzzle # 0125 - Mate in 3 moves	3
Hard chess puzzle 0125	3
Solution to hard chess puzzle 0125	4
Solution 1	4
Right moves for the solution to the hard chess puzzle 0125	7
Explanation for the moves	7
Categories of hard chess puzzle 0125	8
hard chess puzzle 0125 chart	9
How to view the solution to hard chess puzzle 0125	11
How to get help for moves in the hard chess puzzle 0125	12
Play chess for free	13

List of Figures

1	Solve this hard chess puzzle 0125. Mate in 3 moves @ https://gbud.in/gwhqvg3	3
2	Solve this hard chess puzzle online with solution @ https://gbud.in/gwhqvg3	3
3	Initial board position of hard chess puzzle 0125	4
4	Qc2+	5
5	Kf3	5
6	Rf1+	6
7	Kg4	6
8	h5#	7
9	hard chess puzzle 125 chart 1	9
10	hard chess puzzle 125 chart 2	10
11	hard chess puzzle 125 chart 3	10
12	hard chess puzzle 125 chart 4	11
13	Click the solution button to view solutions @ https://gbud.in/gwhqvg3	11
14	Click the help button to get help on next move @ https://gbud.in/gwhqvg3	12
15	Solve more hard puzzles @ https://gbud.in/chshdpz	12
16	Solve other puzzles @ https://gbud.in/chsgppz	12
17	Play chess online for free. Solve puzzles and play with friends	13
18	Solve this puzzle online by scanning this QR code or go to the link below	14

Hard Chess puzzle # 0125 - Mate in 3 moves

Solve this hard chess puzzle and improve your chess games through improvement of your chess strategies and chess tactics. This hard puzzle is a subset of [kids games](#).

Puzzle No : 0125

Difficulty level : hard

Description : Mate in 3 moves

Next Move : Black

Player level : Advanced

Short URL for puzzle : <https://gbud.in/gwhqvg3>

Hard chess puzzle 0125

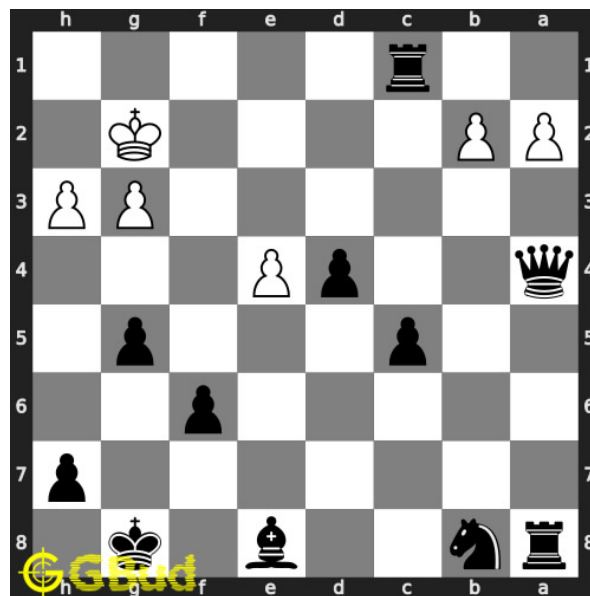


Figure 1: Solve this hard chess puzzle 0125. Mate in 3 moves @ <https://gbud.in/gwhqvg3>



Figure 2: Solve this hard chess puzzle online with solution @ <https://gbud.in/gwhqvg3>

Dont forget to check out [chess puzzles](#), [easy chess puzzles](#), [medium chess puzzles](#), [hard chess puzzles](#) and [chess puzzles collections](#) .

Solution to hard chess puzzle 0125

At this puzzle, next [move](#) is by [Black](#). The objective of the puzzle is to mate in 3 moves.

See the interactive solution at the [puzzle page](#)

Solution 1

Initial board position This is the initial board position of hard chess puzzle 0125.

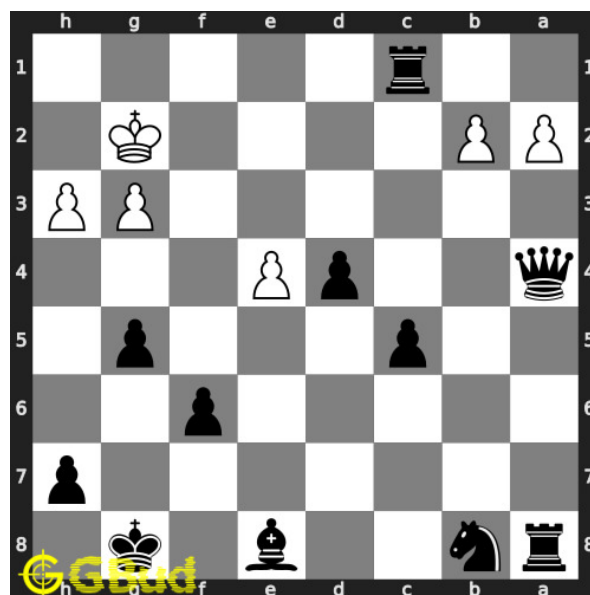


Figure 3: Initial board position of hard chess puzzle 0125

Move 1 Move by black

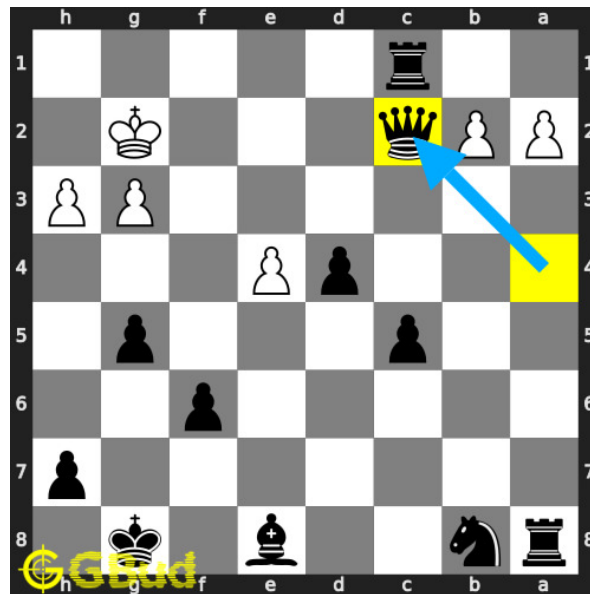


Figure 4: Qc2+

your **queen moves** to **c2** and gives **check** to opponent. this is to drive the opponent's **king** to come to third **rank**.

Move 2 Move by white

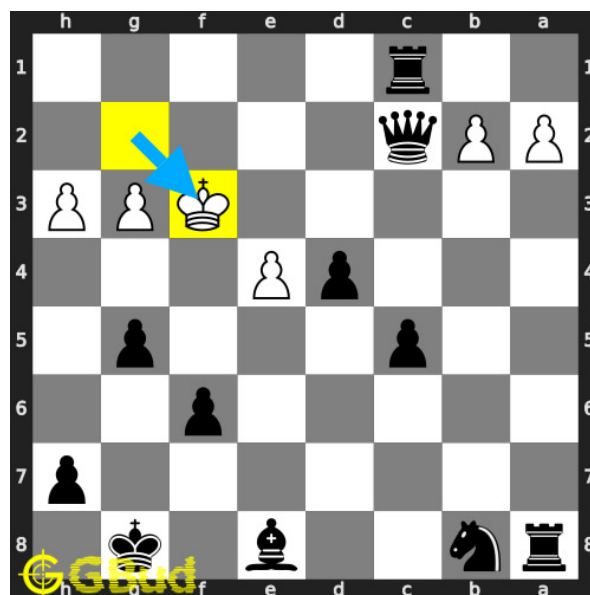


Figure 5: Kf3

opponent's **king moves** to **f3** as the first **rank** is attacked by your **rook**. this is a zugzwang **move** as the opponent's **king** is forced to respond

Move 3 Move by black

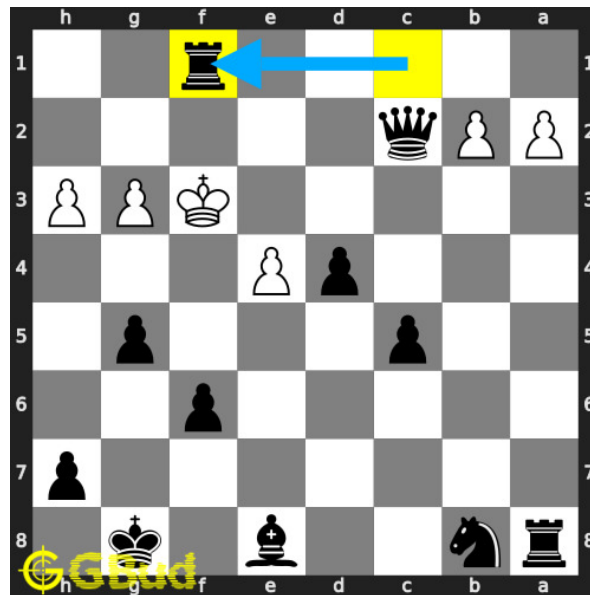


Figure 6: Rf1+

your **rook** moves to **f1** and gives **check** to opponent to force the opponent's **king** to move to **g** file.

Move 4 Move by white

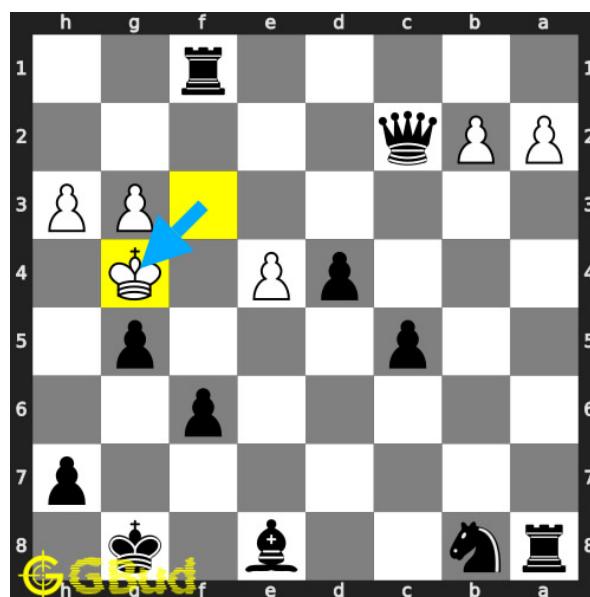


Figure 7: Kg4

opponent's **king** moves to **g4** as this is the only legal **move** available.

Move 5 Move by black

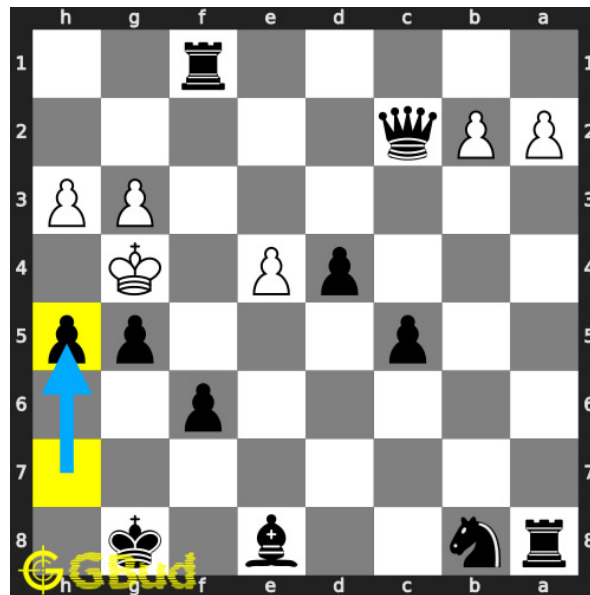


Figure 8: h5#

your **pawn** moves to **h5** and **checkmate**. this is called david and goliath **mate** as the **pawn** is giving the **checkmate**. this is how you can **mate** in 3 moves.

Right moves for the solution to the hard chess puzzle 0125

Based on the objective of the puzzle, you have to make the right moves. Following are the right moves

1. Qc2+, Rf1+, h5#

Explanation for the moves

1. Qc2+ - Your queen moves to c2 and gives check to opponent. This is to drive the opponent's king to come to third rank.
2. Kf3 - Opponent's king moves to f3 as the first rank is attacked by your rook. This is a zugzwang move as the opponent's king is forced to respond
3. Rf1+ - Your rook moves to f1 and gives check to opponent to force the opponent's king to move to g file.
4. Kg4 - Opponent's king moves to g4 as this is the only legal move available.

5. h5# - Your pawn moves to h5 and checkmate. This is called David and Goliath mate as the pawn is giving the checkmate. This is how you can mate in 3 moves.
6. For right move - Your pieces moves are excellent. Keep up the good work
7. For wrong move - You could have had a David and Goliath mate after forcing the king to come to g4. Try again

Categories of hard chess puzzle 0125

This hard chess puzzle falls in these categories.

1. [Hard chess puzzles](#)
2. [Mate in 3 puzzles in chess](#)
3. [Endgame puzzles in chess](#)
4. [Strategy puzzles in chess](#)
5. [Mate pattern puzzles in chess](#)
6. [Zugzwang puzzles in chess](#)
7. [Pawn puzzles in chess](#)
8. [Rook puzzles in chess](#)
9. [Queen puzzles in chess](#)

hard chess puzzle 0125 chart



Figure 9: hard chess puzzle 125 chart 1



Figure 10: hard chess puzzle 125 chart 2



Figure 11: hard chess puzzle 125 chart 3

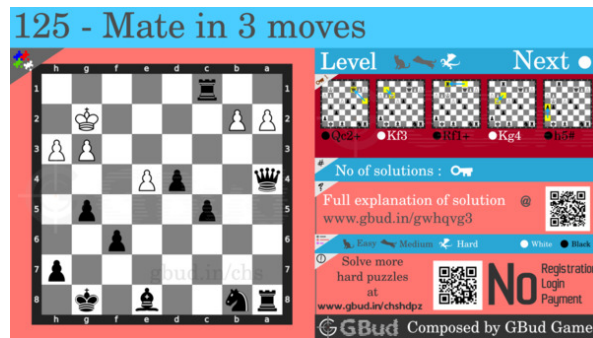


Figure 12: hard chess puzzle 125 chart 4

How to view the solution to hard chess puzzle 0125

To view the [solution to this puzzle](https://gbud.in/gwhqvg3), follow the steps given below

1. Go to the [puzzle page](https://gbud.in/gwhqvg3)
2. Click the solution button (Key as shown [below](https://gbud.in/gwhqvg3)) to view the solution



Figure 13: Click the solution button to view solutions @ <https://gbud.in/gwhqvg3>

How to get help for moves in the hard chess puzzle 0125

To get help or the possible next moves in the puzzle, , follow the steps given below

1. Go to the [puzzle page](#)
2. Click the help button (exclamation mark as shown [below](#)) to get help or suggestion on next possible [move](#)



Figure 14: Click the help button to get help on next move @ <https://gbud.in/gwhqvg3>



Figure 15: Solve more hard puzzles @ <https://gbud.in/chshdpz>



Figure 16: Solve other puzzles @ <https://gbud.in/chsgppz>

Play chess for free

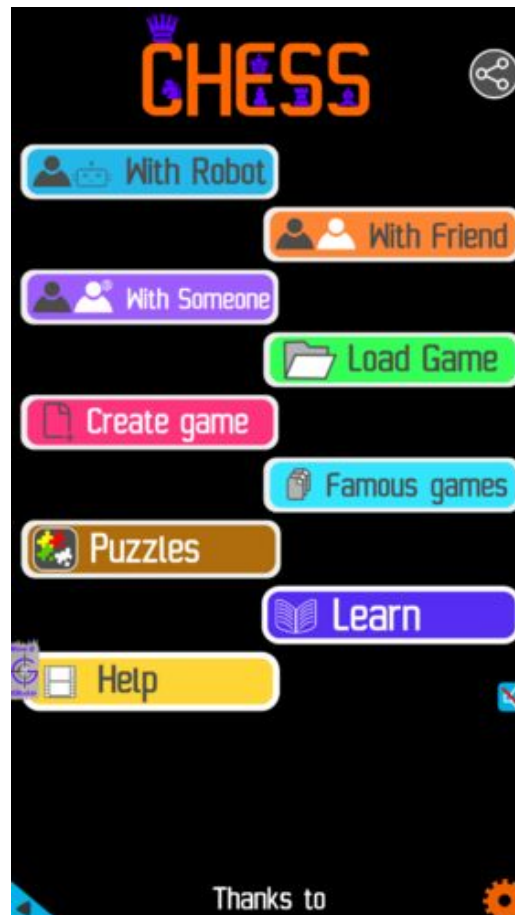


Figure 17: Play chess online for free. Solve puzzles and play with friends

Play chess for free at <https://gbud.in/chs>

We present you a platform to play chess online with friends for free. No need to install any app. You can play chess for free without registration or login.

Simple. You can do several chess related activities.

1. [solve chess puzzles](#)
2. [learn about chess](#)
3. [play chess with computer](#)
4. [play chess with friend](#)
5. [create your own chess games](#)

6. [fen viewer](#)
7. [fen editor](#)
8. [fen generator](#)
9. [pgn viewer](#)
10. [chess board editor](#)
11. [view famous chess games.](#)



Figure 18: Solve this puzzle online by scanning this QR code or go to the link below

<https://gbud.in/gwhqvg3>

Read the latest article on Hard Chess puzzle # 0125 - Mate in 3 moves by scanning this QR code or click the link

Previous article : [« Hard Chess puzzle # 0124 - Free the a file for your pawn](#)

Next article : [Hard chess puzzles »](#)

[Back to top](#)

[Contact Us](#)